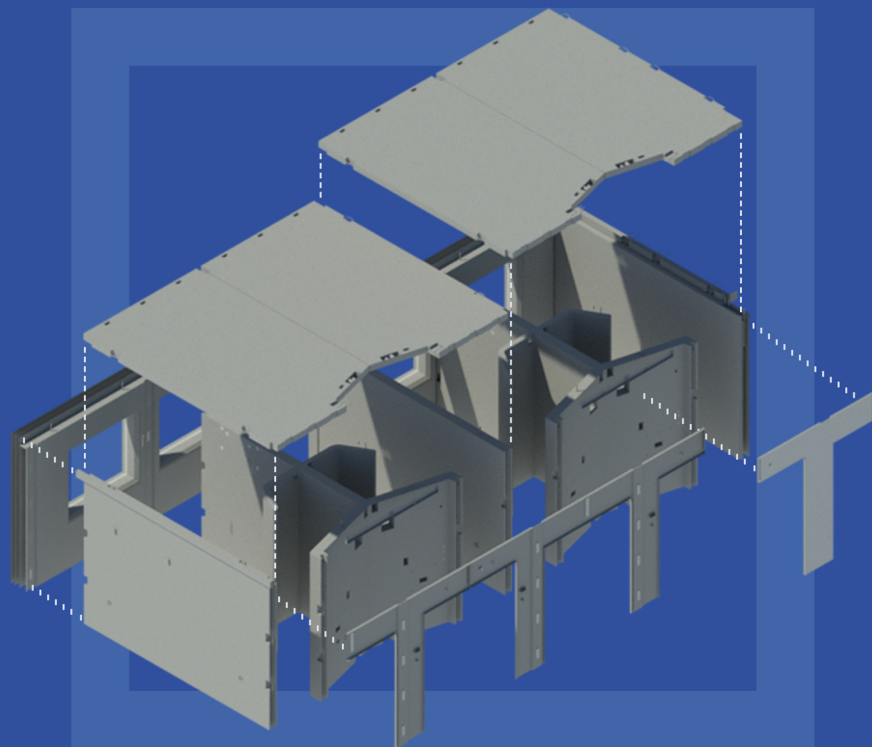




HYBRIDFMA SECURE - PRISON SYSTEM OVERVIEW



Specifically designed to surpass Ministry of Justice requirements, the PCE Offsite approach of structural solutions for prison construction gives the highest levels of quality and robustness combined with an efficient, fast and safe delivery. Designed to comply with the latest edition of the Ministry of Justice Design Guide, the PCE Prisons System has been developed and refined over many years to maximize the many benefits of offsite manufacturing and onsite assembly efficiency. The Secure-Prison System creates a series of repeated cells that are built up with association areas and other rooms to create Houseblocks.

System Features

- Fully Home Office and NOMS compliant
- Security vetted workforce experienced in sensitive project delivery
- Scalable, repeatable platform solution
- Optimised geometric features and limits configurable to clients' unique needs
- Smart connectivity creates robust monolithic structure with ease, speed and predictability
- High quality aesthetic and carbon reducing direct decorations removes need for internal linings
- Seamlessly integrated M&E and security solutions with embedded containment, accommodating windows, doors, and roof lights
- BIM level 2 design
- Fire resistant along with excellent thermal and acoustic performance



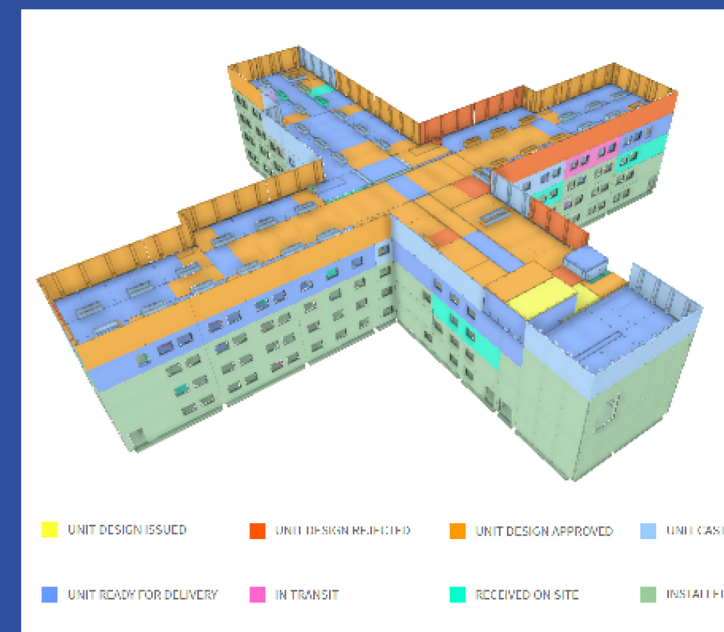
System Benefits

- Reduced carbon through smart design
- Offsite expertise for highest quality and control
- Kit of parts with flexible material interchangeability
- Up 50% reduction in construction programme
- Up to 90% reduction in waste
- Up to 80% reduction in site deliveries
- Up to 80% reduction in on-site personnel



Digital

Utilising a 3D interactive digital twin model, PCE's digital approach offers many benefits and certainty across all phases of project delivery. Colour-coded visualisation of every unique component with detailed information including engineering calculations, unit drawings, and QA data are delivered via instantaneous feedback and real-time status tracking, which significantly aids early decision-making.



The digital approach, complete with enhanced delivery, quality, and non-conformance reporting connects stakeholders including design, project management, supply chain, installation teams and clients, providing easily accessible, reliable, and accurate information through an intuitive, simplified app and web based digital platform.

